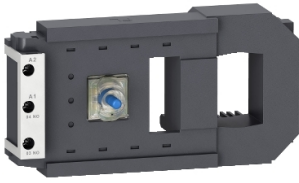


Product datasheet

Specifications



TeSys F - specific contactor coil - 42 V AC 40..400 Hz low consumption

LX9FF042

⚠ Discontinued on: 23 Jan 2021

⚠ Discontinued

Main

Range	TeSys
Product or component type	Specific contactor coil
Device short name	LX9FF
Range compatibility	TeSys TeSys F LC1F contactor
Product compatibility	LC1F115 LC1F150
Control circuit type	AC at 40...400 Hz low consumption
[Uc] control circuit voltage	42 V AC 40...400 Hz
Inductance of closed circuit	0.3 H
Average resistance	2.5 Ohm inrush at 20 °C 64.45 Ohm holding at 20 °C
Operating time	130 ms opening 35 ms closing
Mechanical durability	10 Mcycles
Maximum operating rate	2400 cyc/h 55 °C

Complementary

Coil technology	Without built-in suppressor module
Control circuit voltage limits	Operational: 0.85...1.1 Uc (at 55 °C) Drop-out: 0.2...0.55 Uc (at 55 °C)
Inrush power in VA	690...855 VA 40...400 Hz (at 20 °C)
Hold-in power consumption in VA	6.6...8.1 VA 40...400 Hz (at 20 °C)
Heat dissipation	5.9...7.2 W

Environment

Ambient air temperature for operation	-5...55 °C
Net weight	0.43 kg

Packing Units

Unit Type of Package 1	PCE
Number of Units in Package 1	1
Package 1 Height	6.2 cm
Package 1 Width	7.9 cm

Package 1 Length	16.6 cm
------------------	---------

Package 1 Weight	430.0 g
------------------	---------

Contractual warranty

Warranty (in months)	18
----------------------	----



Environmental Data

Schneider Electric aims to achieve Net Zero status by 2050 through supply chain partnerships, lower impact materials, and circularity via our ongoing “Use Better, Use Longer, Use Again” campaign to extend product lifetimes and recyclability.

[Environmental Data explained >](#)

[How we assess product sustainability >](#)



Environmental footprint

Total lifecycle Carbon footprint	70 kg CO2 eq.
Carbon footprint of the manufacturing phase [A1 to A3]	0.9 kg CO2 eq.
Carbon footprint of the distribution phase [A4]	0 kg CO2 eq.
Carbon footprint of the installation phase [A5]	0 kg CO2 eq.
Carbon footprint of the use phase [B2, B3, B4, B6]	69 kg CO2 eq.
Carbon footprint of the end-of-life phase [C1 to C4]	0.3 kg CO2 eq.

Use Better



Materials and Substances

Packaging made with recycled cardboard	Yes
Packaging without single use plastic	Yes
SCIP Number	975ba4d0-bc82-40e2-8faa-6f6819f63b0c
EU RoHS Directive	Compliant By Exemption
REACH Regulation	Reference contains Substances of Very High Concern above the threshold

Use Longer



Lifetime extension

Repair	No
--------	----

Use Again



Repack and remanufacture

Recyclability potential, in %	95
Take-back	No
WEEE Label	 The product must be disposed on European Union markets following specific waste collection and never end up in rubbish bins