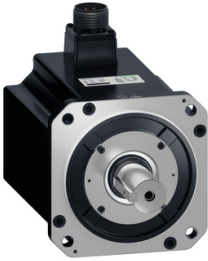


Product datasheet

Specifications



BEH18 servo motor, Lexium 18, 380V,3.0kW,L130,23bit, OPT MT

BEH18LM3033CA6D

Main

Range	Lexium 18
Range compatibility	Easy Lexium 18
Device short name	BEH18
Product or component type	Servo motor

Complementary

Maximum mechanical speed	3000 rpm
[Us] rated supply voltage	380 V
Network number of phases	Three phase
Continuous stall current	10.13 A
Continuous stall torque	9.8 N.m, 380 V, three phase
Continuous power	3000 W
Peak stall torque	29.4 N.m, 380 V, three phase
Nominal output power	3000 W, 380 V, three phase
Nominal torque	9.8 N.m, 380 V, three phase
Nominal speed	3000 rpm, 380 V, three phase
Maximum current Irms	30.39 A at 3 kW, 380 V
Maximum permanent current	30.39 A
Product compatibility	Motion servo drive motion servo motors motor at 3 kW, 380 V, three phase
Shaft end	Parallel key
Second shaft	Without second shaft end
Shaft diameter	28 mm
Shaft length	63 mm
Key width	8 mm
Feedback type	23 bits optic multi turn encoder
Speed feedback resolution	8388608 points/turn
Holding brake	Without
Mounting support	Asian standard flange
Motor flange size	130 mm
Electrical connection	2 connectors male/female
Torque constant	0.967 N.m/A at 40 °C

Back emf constant	69.11 V/krpm at 40 °C
Number of motor poles	10
Rotor inertia	7.28 kg.cm ²
Maximum radial force Fr	686 N
Maximum axial force Fa	196 N
Type of cooling	Air-cooled
Length	192.9 mm
Number of mounting holes	4
Mounting holes diameter	9 mm
Width	130 mm
Height	174.5 mm
Depth	192.9 mm
Product weight	9.9 kg
Encoder type	Optic encoder
Inertia	7.28 kg.cm ²

Environment

IP degree of protection	IP67
Ambient air temperature for operation	0...40 °C

Packing Units

Unit Type of Package 1	PCE
Number of Units in Package 1	1
Package 1 Height	25 cm
Package 1 Width	40 cm
Package 1 Length	60 cm
Package 1 Weight	11.9 kg
Unit Type of Package 2	P06
Number of Units in Package 2	6
Package 2 Height	90 cm
Package 2 Width	60 cm
Package 2 Length	80 cm
Package 2 Weight	77.4 kg



Environmental Data

Schneider Electric aims to achieve Net Zero status by 2050 through supply chain partnerships, lower impact materials, and circularity via our ongoing “Use Better, Use Longer, Use Again” campaign to extend product lifetimes and recyclability.

[Environmental Data explained >](#)

[How we assess product sustainability >](#)



Environmental footprint

Total lifecycle Carbon footprint	12 354 kg CO2 eq.
Carbon footprint of the manufacturing phase [A1 to A3]	85 kg CO2 eq.
Carbon footprint of the distribution phase [A4]	2 kg CO2 eq.
Carbon footprint of the installation phase [A5]	2 kg CO2 eq.
Carbon footprint of the use phase [B2, B3, B4, B6]	12 243 kg CO2 eq.
Carbon footprint of the end-of-life phase [C1 to C4]	22 kg CO2 eq.
Environmental Disclosure	Product Environmental Profile

Use Better



Materials and Substances

EU RoHS Directive	Compliant By Exemption
REACH Regulation	Reference contains Substances of Very High Concern above the threshold

Use Longer



Lifetime extension

Repair	No
--------	----

Use Again



Repack and remanufacture

Recyclability potential, in %	90
End of life manual availability	End of Life Information
Take-back	No